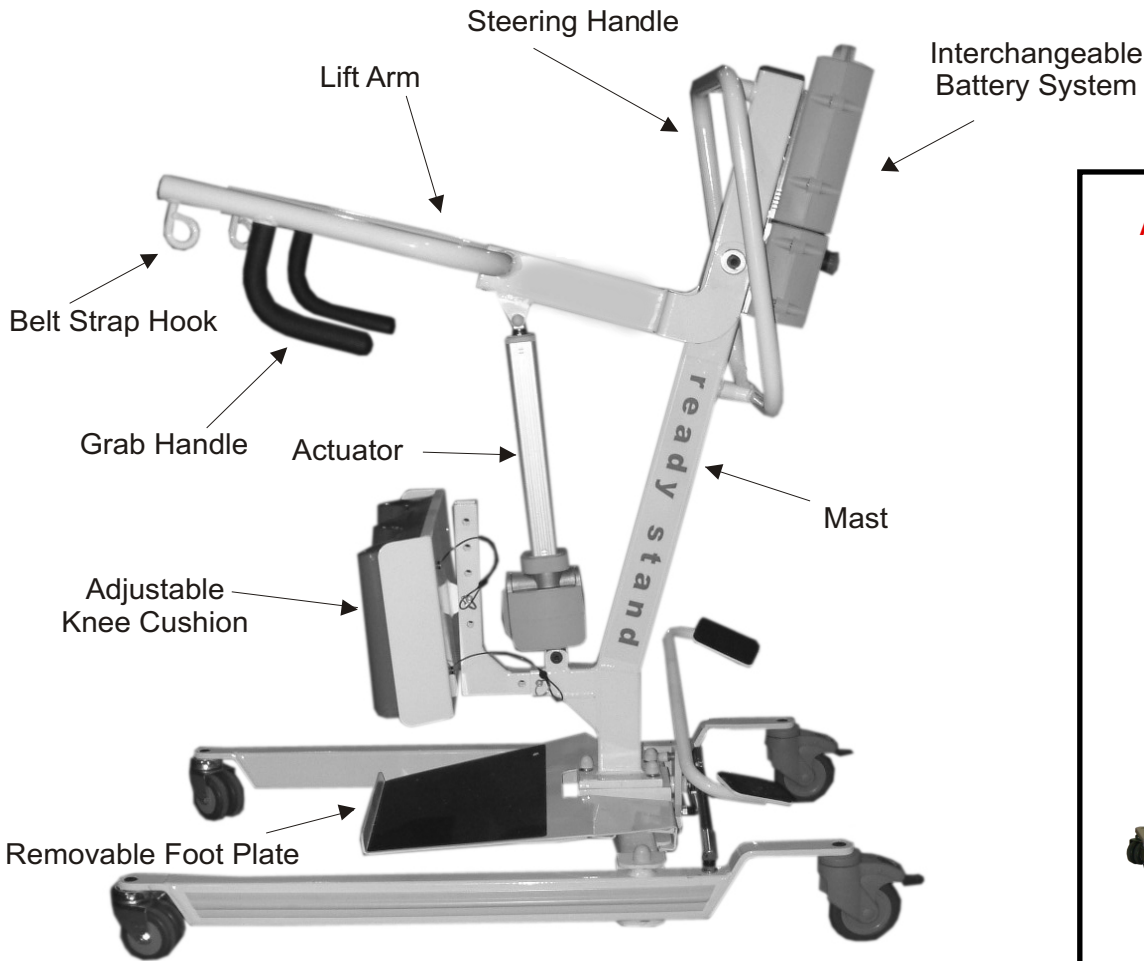


Ready Stand

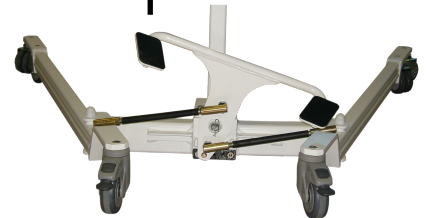


Adjustable Leg Base

Push Down
to Widen Base



Push Down
to Close Base

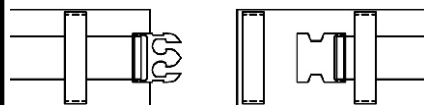


Belt Placement

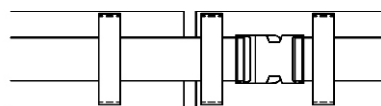


Select and position the appropriate belt around the patient as per belt application instructions.

Belt Buckle

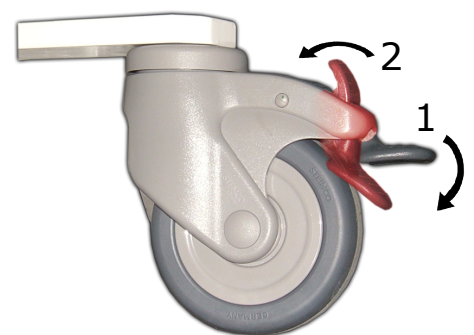


Buckle assembly open



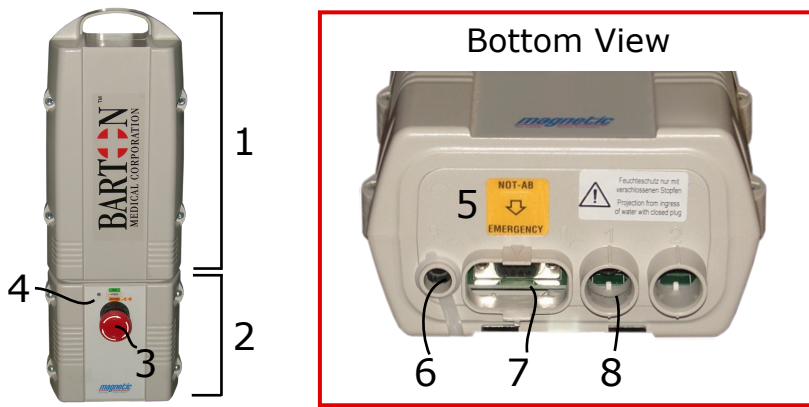
Buckle assembly closed

Locking Casters



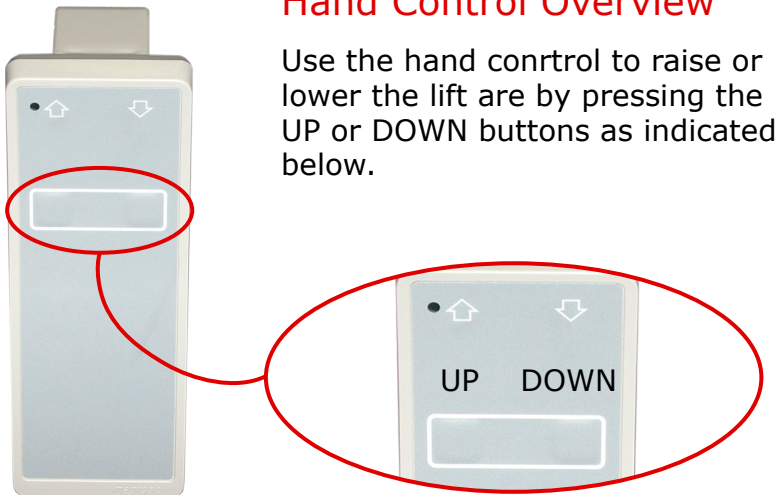
Before lifting the patient, lock the rear casters. To lock them, step down on the gray locking tab (1). To release the lock, step on the lock release tab (2) *highlighted in red*.

Battery and Electronics Pack Overview



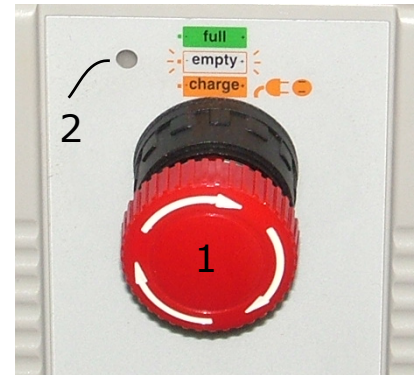
- | | |
|-------------------------|-----------------------|
| 1. Battery Pack | 5. Emergency Lowering |
| 2. Electronics Pack | 6. Charging Port |
| 3. Emergency Stop | 7. Hand Control Port |
| 4. Charge Indicator LED | 8. Lift Motor Port |

Hand Control Overview



Use the hand control to raise or lower the lift are by pressing the UP or DOWN buttons as indicated below.

Electronics Pack Features

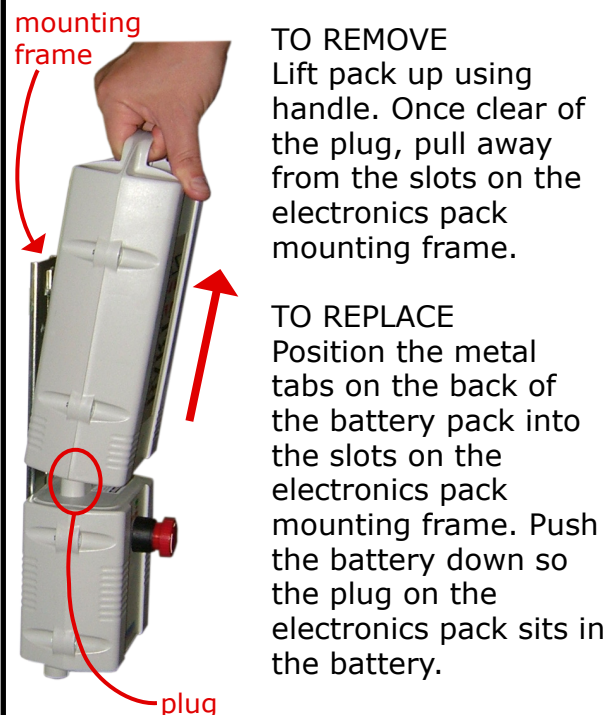


1. RED Emergency Stop Button
 - Press button to shut off.
 - Turn the button to disengage.

2. Charge Indicator LED:

Green light - battery charged.
Amber light - battery is charging.
Flashing Amber light - battery is low/empty

Removing Battery Pack



TO REMOVE
Lift pack up using handle. Once clear of the plug, pull away from the slots on the electronics pack mounting frame.

TO REPLACE
Position the metal tabs on the back of the battery pack into the slots on the electronics pack mounting frame. Push the battery down so the plug on the electronics pack sits in the battery.

Manual Lowering

To lower the lift arm manually, unlock the red handle on the top of the lift motor (1).

Turn the barrel on the lift motor to lower the lift arm (2).

